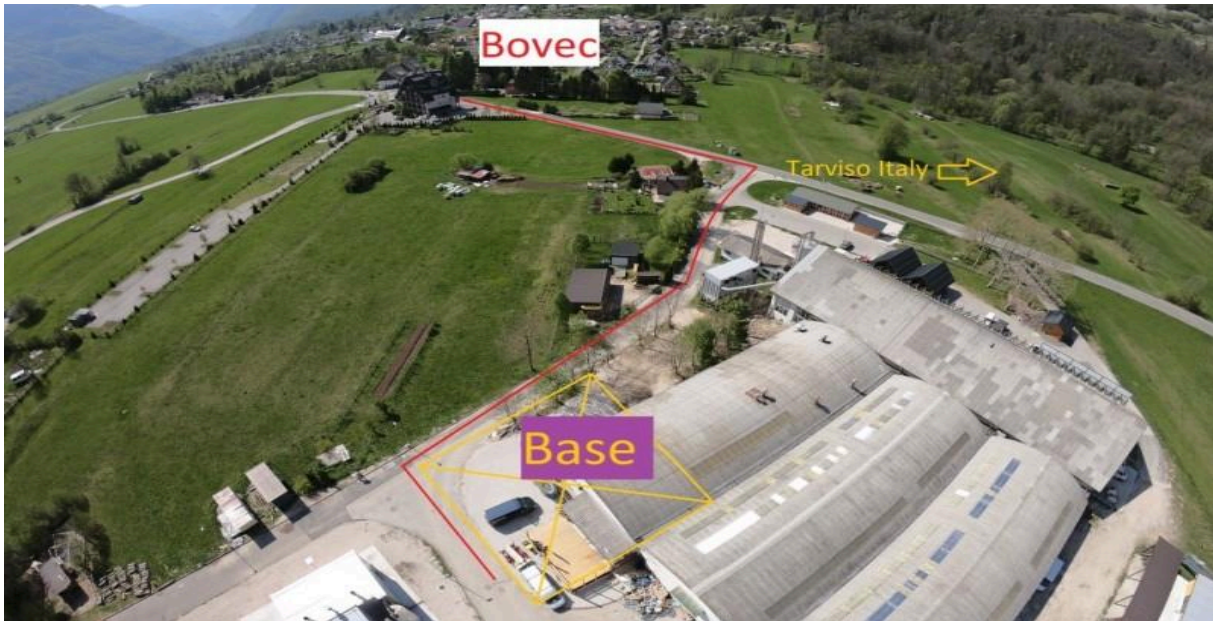


We meet in about 10-15 min. before departure at our base.

**Address:** Industrijska cona 4, Bovec. (Our base is **at the back of the old factory building**)



Your guide will give you your personal equipment: neoprene clothes, jacket, and boots. After you change your clothes please leave everything which belong to you in a safe box at the base. Please, do not bring anything which belongs to you to the bus or minivan. When you are ready you will get helmet and PFD (Personal Flotation Device).

After you walk up to canyon, you will have to listen the safety talk. Please pay attention! Every details could be important during the trip.

Your guide will check all the equipment you have, then you will be ready to enjoy the canyoning trip. On the first easier part of the trip the guide will explain everything again.

Our buses or vans are waiting for you at the take out destination. It takes 10 min. drive back to the base where you can give back all the equipment! Feel free to use changing and bathroom.

If you enjoyed the trip don't forget the tip!